

## What's next?

Thanks for bringing your pet in to see us. We performed a test for mature heartworm infections, as well as a number of infections transmitted by ticks.

We want you to know that your pet tested positive for antibodies to **Anaplasma**. Let's talk about what's next.

### Test results



#### **Anaplasma detected!**

Your pet tested positive for antibodies to **Anaplasma**. This is a bacterial infection transmitted by ticks. The test we performed indicates presence of two bacterial species that can cause anaplasmosis.

### We are here to help, so call us if you have questions.

In good health,  
Your friends at



This information is provided for educational purposes only and is being provided to you at the request of the attending veterinarian at the veterinary hospital indicated above.

© 2024 IDEXX Laboratories, Inc. All rights reserved. • 09-2690210-02 • The IDEXX Privacy Policy is available at [idexx.com](https://www.idexx.com). All ®/™ marks are owned by IDEXX Laboratories, Inc. or its affiliates in the United States and/or other countries.

## We have a plan!

Finding out your pet has a positive result can be concerning. That's why we built a simple plan to determine if treatment is needed.

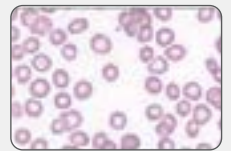
### Step 1 : What does this mean?

- + Your pet was bitten by a tick that carried the bacteria that causes anaplasmosis. We now know that antibodies to *Anaplasma* were found in the blood sample, which may be due to a previous or current infection.
- + Though dogs often display no clear signs of anaplasmosis, this dangerous infection may cause decreased appetite, fever, lethargy, lameness, bruising, swollen joints and other serious health problems.
- + Rest assured, your pet cannot directly transmit *Anaplasma* to you or your family.

### Step 2 : Does your pet need treatment?

We need to investigate if your pet should be treated for anaplasmosis. Thankfully, one or two simple tests can help us make this decision.

- + Complete blood count to evaluate:
  - Platelets
  - Red blood cells
  - White blood cells
  - Immune response



Let's discuss what next tests are most appropriate. Give us a call so we can make a plan together.

### Step 3 : What does treatment look like?

If the follow-up tests indicate your pet would benefit from treatment, we will prescribe a long course of an antibiotic. Sometimes additional treatments may be necessary, depending on how the rest of the body has been impacted by anaplasmosis.

### Step 4 : What can I do next?

- + We'll continue to test during annual checkups as signs of disease or infection can be hard to detect.
- + It's also important to ensure your pet is protected with flea and tick prevention year-round.
- + Keep up regular tick checks—be sure to look around the ears, under the tail, in the armpits and between the toes! And equally as important, check your human family members as these same ticks can infect them as well.